

Goodsense New Hydraulic Forklift 35 Ton Heavy Diesel Forklift truck with CE

Our Product Introduction

Basic Information

- Place of Origin: China
- Brand Name: Goodsense
- Model Number: FD330
- Minimum Order Quantity: Negotiable
- Price: Negotiable
- Packaging Details: Bare packaging
- Delivery Time: 30-40work days
- Payment Terms: T/T

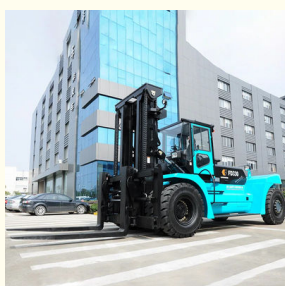


Product Specification

- Model Number: FD330
- Rated Loading Capacity: 33 Ton
- Place Of Origin: China
- Brand Name: Goodsense
- Name: Forklift
- Condition: New
- Energy Supply: Reference Introduction
- Advantage: Small Vibration And Noise
- Highlight: goodsense hydraulic forklift,
goodsense diesel forklift truck,
hydraulic diesel forklift truck



More Images



for more products please visit us on rdforklift.com

Product Description

Advancement

Load sensing priority steering hydraulic system, double pump flow fuel feeding design improves the mast working efficiency and energy saving. Multichannel image system is an option to improve the operation safety.

Comfort Cooling System

Ergonomic design, reasonable and easy operation device layout, equipped with adjustable seats and steering wheel.

Advancement

Load sensing priority steering hydraulic system, double pump flow fuel feeding design improves the mast working efficiency and energy saving. Multichannel image system is an option to improve the operation safety.

Convenient Maintenance

Ergonomic design, reasonable and easy operation device layout, equipped with adjustable seats and steering wheel.

Reliability

Equipped with heavy-duty driving axle with final reduction drive and wheel planetary reductor for safe and reliable operation at bad working conditions. Standard equipped caliper disc hydraulic braking system.

Reliable power system, Optional engines well-known brands of engines, reliable quality, strong power, combined with advanced power matching and control technology, power performance has been greatly optimized.

Cooling System

Optimization design on the cooling channel with another air outlet on the lower counter-weight and air fluid science design on the upper counter-weight. The hood rear tuyere is designed as shutter type wind guide scrambling structure to mostly improve the fan efficiency.

Item			FD300	FD320
Features	Rated Load	Q(Kg)	30000	32000
	Load Center	c(mm)	1220	1220
	Wheelbase	y(mm)	4400	4800
Weight	Weight	kg	38000	42000
Chassis	Tire Specs:Front		14.00-24	16.00-25
	Tire Specs:Rear		14.00-24	16.00-25
	Tires Qty,front/rear(X-dreave wheels)		4/2	4/2
	Wheel tread:Front	b3(mm)	2220	2430

	Wheel tread:Rear	b4(mm)	2300	2230
Dimensions	Mast/carriage tilt angle(front/rear)	Degree(°)	6/12	6/12
	Mast height(fork lowering)	h1(mm)	3970	4150
	Mast lifting height	h2(mm)	4000	4000
	Max.height	h3(mm)	5940	6120
	height to head guard(height to cab)	h4(mm)	3440	3460
	Overall height(with forks)	L3(mm)	8950	9460
	Fork front vertical surface to the rear end of the vehicle	L2(mm)	6550	7060
	Overall width	b1(mm)	3060	3360
	Fork dimension	(mm)	2400*320*110	2400*320*120
	Fork carriage width	b2(mm)	3000	3000
	Mast min ground(with load)	m1(mm)	350	400
	Wheelbase center min ground(with load)	m2(mm)	420	460
	Min.turning Radius	Wa(mm)	6160	6600
	Travel speed(with load/without load)	km/h	24/28	25/28
Performance	Max.lifting speed(with load/without load)	mm/s	260/280	260/280
	traction	KN	180	200
	gradeability(with load/without load)	%	20/22	20/20
	Driving brake		Hydraulic clamp disc	Hydraulic clamp disc
Engine	Engine brand/model	Optional one	WeiChai Engine	WeiChai Engine
			WD10G240E	WD10G240E
		Optional two	Dongfeng cummins	Dongfeng cummins
		Rated Output	178(Kw)	178(Kw)
		Cylinder No	6	6
Others	Transmission gears(Front/rear)		2/1	2/1



Taizhou Ruidong Import and Export Co., Ltd



18367688514



gj_0208@163.com



rdforklift.com

Room 606, East Building 3, Tengda Center, Jiaojiang District, Taizhou, Zhejiang, China